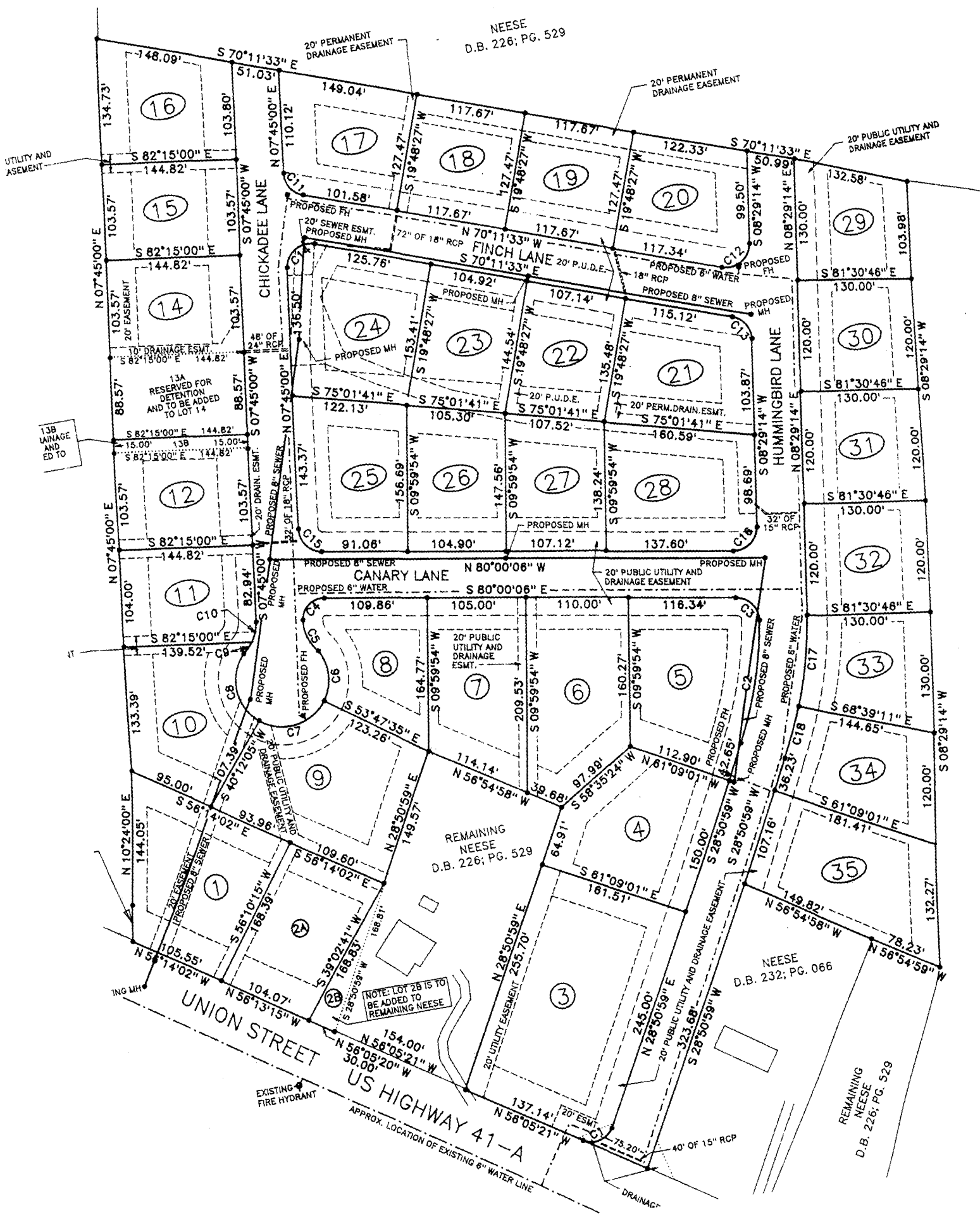


NEESE  
D.B. 226; PG. 529

BAUM  
D.B. 219; PG. 1

NEESE  
D.B. 232; PG. 066

REMAINING  
NEESE  
D.B. 226; PG. 529



13A  
RESERVED FOR  
DETENTION  
AND TO BE ADDED  
TO LOT 14

13B  
LAINAGE  
AND  
ED TO

NOTE: LOT 25 IS TO  
BE ADDED TO  
REMAINING NEESE

REMAINING  
NEESE  
D.B. 226; PG. 529

APPROX. LOCATION OF EXISTING 6" WATER LINE

EXISTING  
FIRE HYDRANT

40" OF 15" RCP

20" ESMT

75.20'

137.14'

N 56°05'21" W

N 56°05'21" W

N 56°05'21" W

N 56°05'21" W

N 56°05'21" W

N 56°05'21" W

N 56°05'21" W

N 56°05'21" W

N 56°05'21" W

N 56°05'21" W

N 56°05'21" W

N 56°05'21" W

N 56°05'21" W

N 56°05'21" W

N 56°05'21" W

N 56°05'21" W

N 56°05'21" W

N 56°05'21" W

N 56°05'21" W

N 56°05'21" W

N 56°05'21" W

N 56°05'21" W

N 56°05'21" W

N 56°05'21" W

N 56°05'21" W

N 56°05'21" W

N 56°05'21" W

N 56°05'21" W

N 56°05'21" W

N 56°05'21" W

N 56°05'21" W

N 56°05'21" W

N 56°05'21" W

N 56°05'21" W

N 56°05'21" W

N 56°05'21" W

N 56°05'21" W