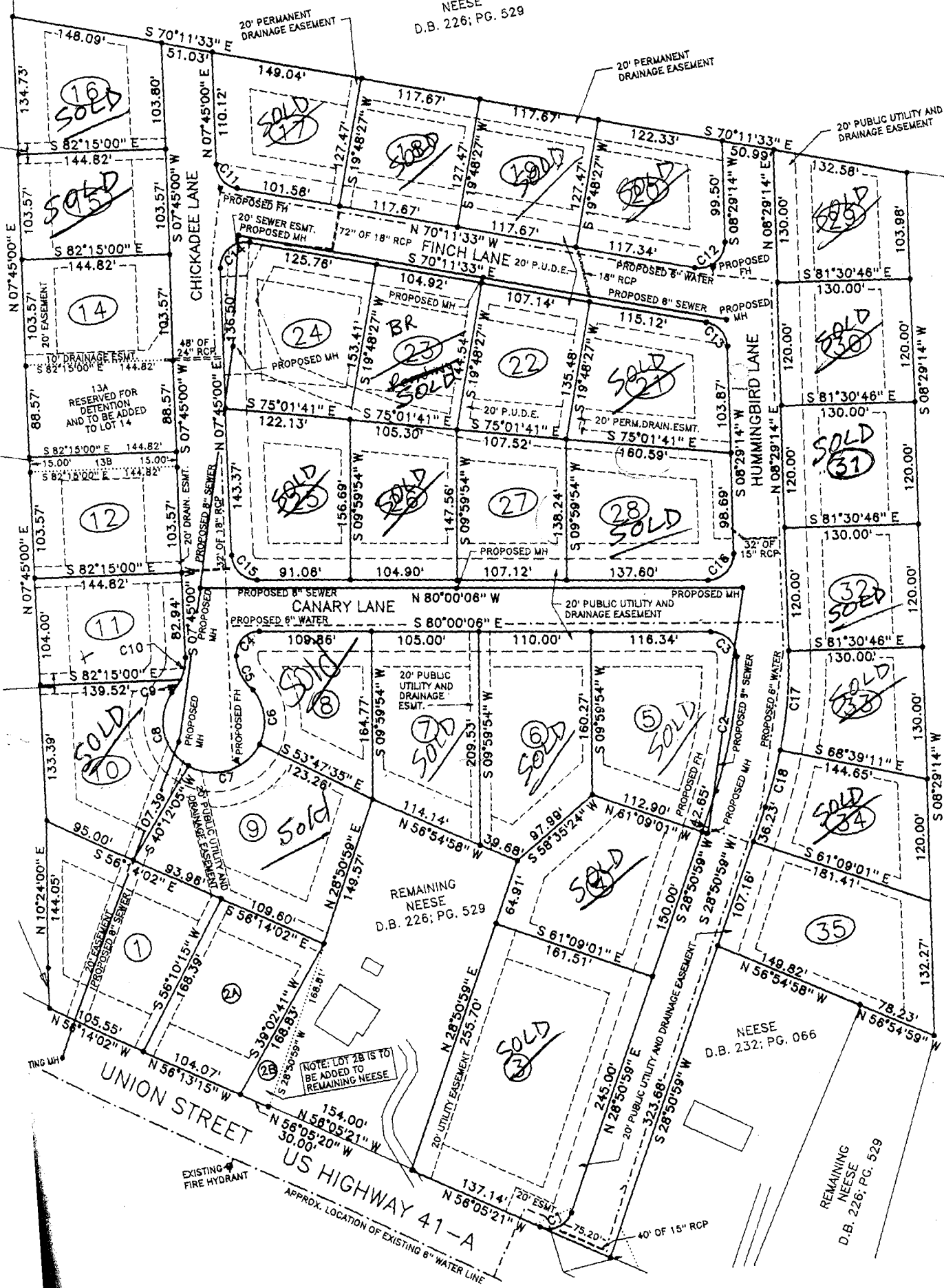


NEESE
D.B. 226; PG. 529



D.B. 2

NEESE
D.B. 232; PG. 066

REMAINING
NEESE
D.B. 226; PG. 529

NOTE: LOT 28 IS TO
BE ADDED TO
REMAINING NEESE

EXISTING
FIRE HYDRANT

APPROX. LOCATION OF EXISTING 6" WATER LINE